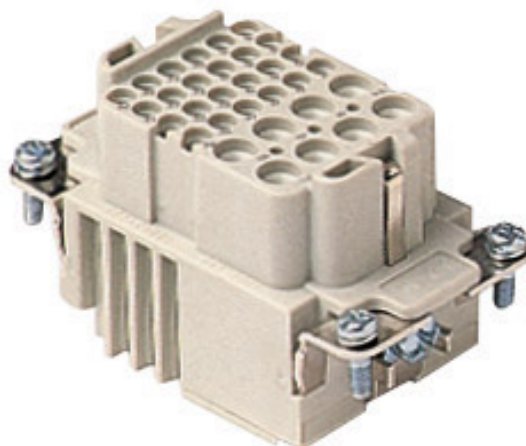






Product Sheet

Part Number: CXF 8/24



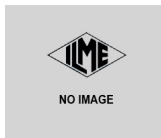
Family	CLASS insert series
Version	crimp connections
Series	CX
Product type	for female contacts 16A and 10A
Model	female insert
Reference standard	EN 61984 (2001-11)
No. of poles	8 poles + 
Auxiliaries poles	24 poles (10A max - 250V)
Voltage (V)	400V
Current (A)	16A (A.C./D.C.)
Quality mark	 600V  GOST 
IP degree of protection	IP20 degree of protection without enclosure; IP65, IP66, IP67, IP68 (EN 60529) and IP69K (DIN 40050 - 9) with enclosure
Fixing centre distance	size "57.27"

The information and the dimensions contained are not binding and may be changed without prior notice.
The drawing's dimensions are in mm.

Impulse withstand voltage 4kV

Pollution degree 2

Notes



CXF/M 8/24 inserts

- characteristics according to EN 61984:

16A 230/400V 4kV 3

16A 400V 4kV 2

10A 160V 2,5kV 3

10A 250V 4kV 2

- rated voltage according to UL/CSA: 600V

- insulation resistance: > 10 GOhm

- ambient temperature limit: -40 °C ... +125 °C

- are made of self-extinguishing thermoplastic resin UL 94 V0

- mechanical life: > 500 cycles

- contact resistance: < 1 mOhm (8 poles) < 3 mOhm (24 poles)

- PCBs interface, see article C1F 2.4 (10A contacts)

- enclosures: size 57.27:

C-TYPE IP65/IP66

C7 IP67 stainless steel lever

V-TYPE IP65/IP66 stainless steel lever

T-TYPE IP65 insulating

JEI zinc-plated steel lever

BIG hoods

aggressive environments

EMC

central lever

IP68

- panel supports: COB

The information and the dimensions contained are not binding and may be changed without prior notice.
The drawing's dimensions are in mm.